

STEELtime

News and Trends for Steel and Stainless Steel from HOBA STEEL • Issue 3/2016

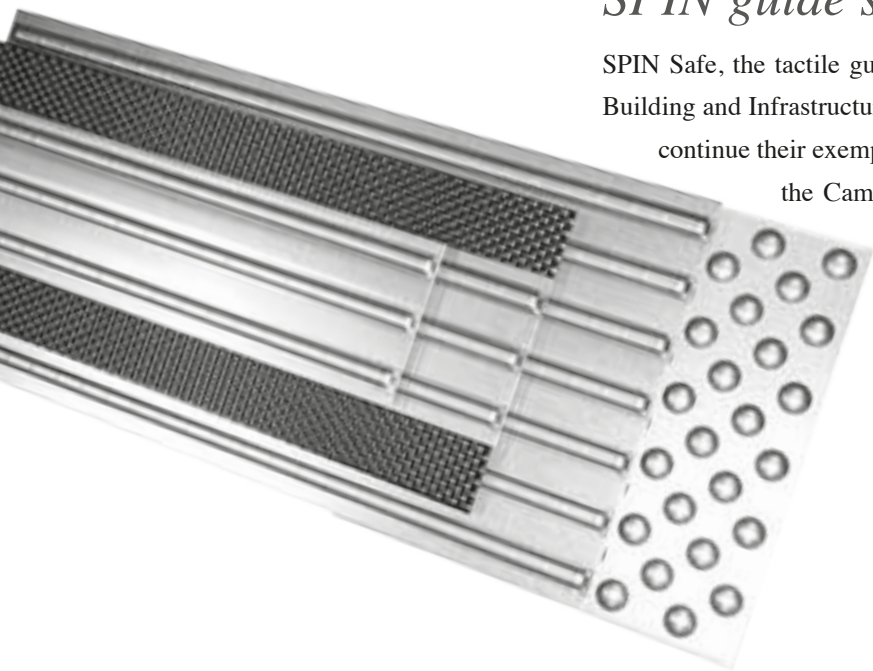
SPIN stainless steel tiles

HOBA STEEL GmbH

SPIN floor coverings are used world-wide in public spaces where many people are on the move. Not only lifts and escalators are robustly equipped with metal; designers have discovered metal floor coverings made by HOBA STEEL now and use them in their projects. In today's issue, we report on the projects Versailles Palace by Dominique Perrault, Timmerhuis Rotterdam by Rem Koolhaas, Campus building Mülheim by HPP Architects. Store construction projects with Aston Martin, Uniqlo Berlin, Megastore Chelsea London, planned by Schwitzke und Partner, Stone Island Rom, planned by Marc Buhre/Zeichenweg TM, Diesel New York, planned by Diesel HQ, Dula Shop, planned by Dula Ladenbau.

SPIN guide system for the blind

SPIN Safe, the tactile guide system for the blind made by HOBA STEEL. Building and Infrastructure Service of North Rhine-Westphalia (BLB NRW) continue their exemplary implementation of barrier-free accessibility in the Campus Mülheim project. SPIN Safe was designed in accordance with the specifications of DIN 32984. The user surface is stainless steel in all cases. The broad range of base surfaces offers the designer a subsequent installation on existing floors and various materials, which can be between 1.5 and 20 mm thick. Whether in combination with PVC, linoleum, carpets, rubber padding, wood, tiles or cement blocks – HOBA STEEL offers all fitting panel thicknesses.



Rotterdam community centre

The new community centre of the city of Rotterdam, which opened recently, was designed by OMA architects. The administrative building is signified by the wide and spacious architecture which has nothing in common with the small offices of the past. In cooperation with PBS Holland, HOBA STEEL produced the more than 4,000 m² of raised floors. The top sides of the raised floor plates in the format 600 x 600 mm are made of a special aluminium alloy; the surface design in SPIN Plan.

Versailles Palace

Versailles Palace has been extended by a new entrance area. Its floor, in original 1,070 x 1,070 mm Versailles parquet format, was covered with SPIN Ferrite and SPIN Brass from HOBA STEEL. Further halls and rooms got a tile format in the dimension 300 x 2,200 mm. Seven staircases were also equipped with steps made of SPIN Ferrite.



Store construction projects



SPIN Plan Bronze triangle 1.232 x 638 x 1.232 mm
ROM/AMSTERDAM/HAMBURG



SPIN Plan Square 1.200 x 1.200 mm
DÜSSELDORF



SPIN Plan Rectangle 1.200 x 2.400 mm
BERLIN

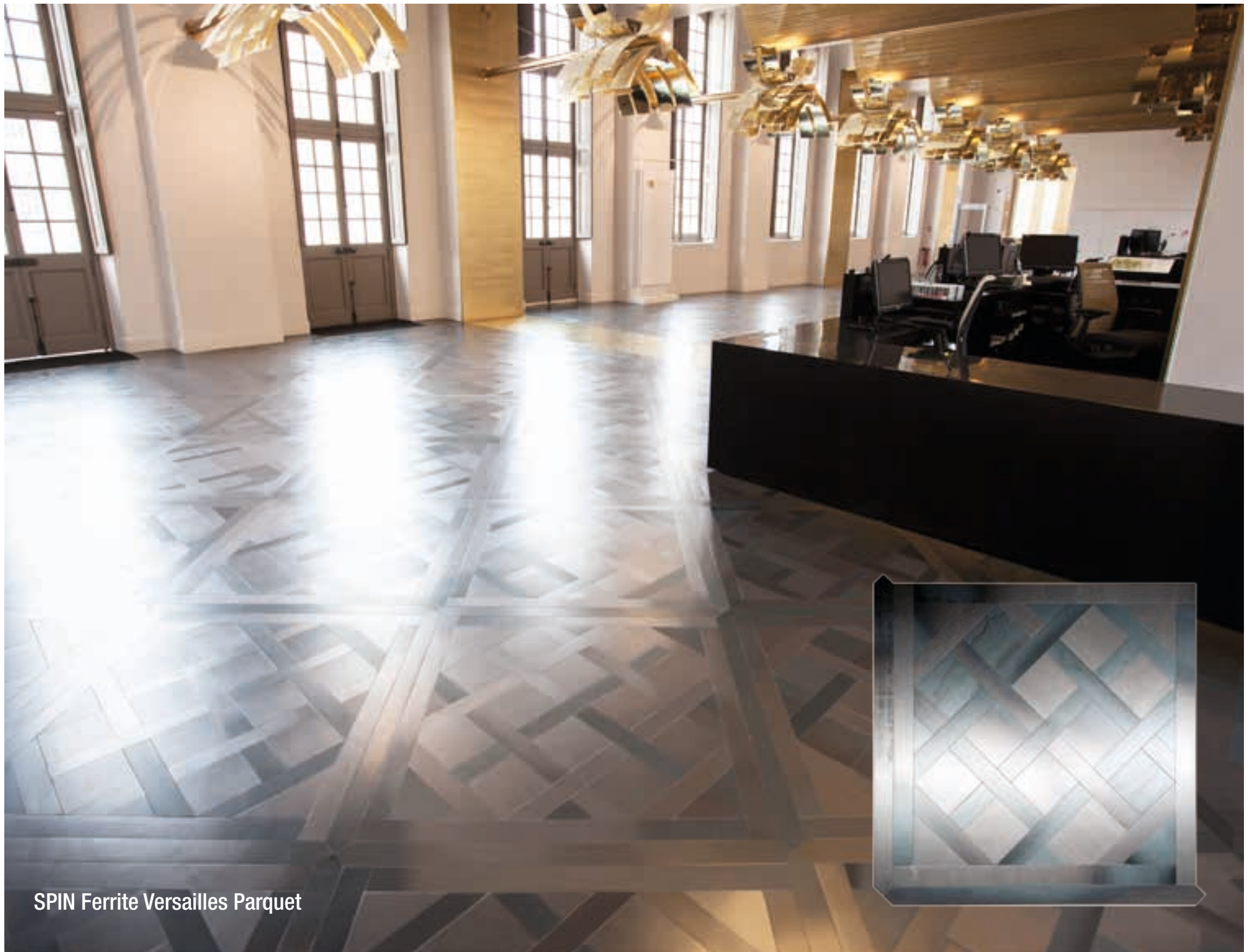


SPIN Plan Oval 600 x 600 mm
LONDON



SPIN Ferrit Versailles Parquet 1.070 x 1.070 mm
VERSAILLES

SPIN Ferrite by HOBA STEEL in Versailles Palace



SPIN Ferrite Versailles Parquet

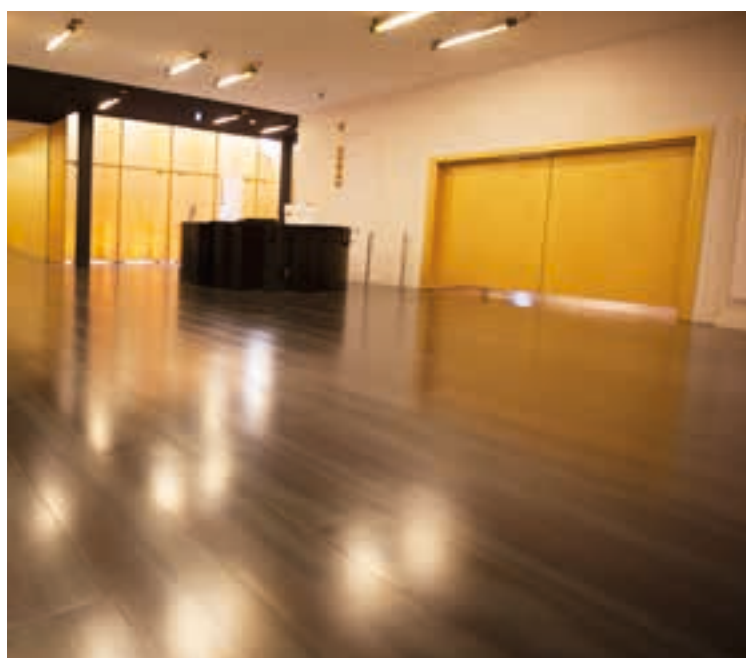
It was a serious challenge for the museum's management to transfer the long and complex construction history of Versailles Palace into a modern museum building. The team of Dominique Perrault won the assignment to convert the Dufour Pavilion from the 17th century into the central, heavily trafficked visitor area of the museum. Perrault reacted to this task with a material contrast, but always with regards to the architectural original while maintaining historical foundations.

He combined the originally used materials of stone and wood with a lot of gold and other metals. Best example for this solution is the SPIN Ferrite Versailles parquet

from HOBA STEEL, which was installed in the entire new foyer, seven staircases as well as further halls and rooms for events. The traditional parquet pattern is maintained; the material revolutionised: At first, 43 stamped individual ferrite steel plates, each with a dimension of 1,070 x 1,070 mm, were pre-installed on a bearing surface. The edges are slightly rounded during this stamping process which provides a certain 3D effect on the silky surface.

The surface of the ferrite base is treated with a coat of wax in the factory, which needs to be renewed or retained regularly, because ferrite steel is not rust-free.

The colour tints of this material cannot be controlled (it varies from blue to grey to nearly black) and occurs during the milling between glowing hot to cooling down of the steel. These irregularities in the colours of the surface in particular provide SPIN ferrite steel with a certain charm. In heavily trafficked areas, the surfaces and the colours also change over time – just as in any century-old architecture. Areas that are used less frequently show the original material for a longer time and better. This expected and seemingly natural wear stands for an especially „true“ quality. SPIN Ferrite from HOBA STEEL – made for people and environments that are committed to tradition and open to innovation.



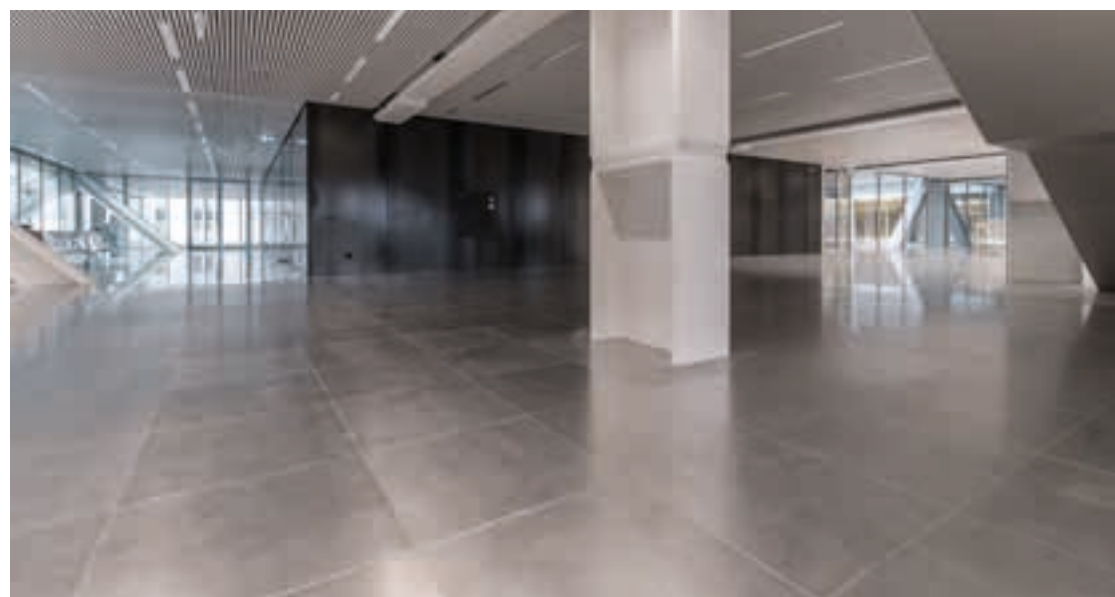
Timmerhuis Rotterdam completed

OMA Architects rely on metal floors by HOBA STEEL

OMA Architects rely on SPIN metal floors by HOBA STEEL in the traffic zones. The renovated and expanded Timmerhuis object was reopened in Rotterdam in the spring of 2016. The OMA architects Rem Koolhaas and Reinier de Graf continue their success in their news light-flooded architecture which is enormously many-faceted and flexible: It provides optimal conditions for the Rotterdam city administration with its 1,800 employees as well as for the 84 apartments located above that. Due to the cubistic structure of the façade, the visitor expects an administration building with many angled hallways

and small offices. Instead of that large atriums and wides, spacious areas dominate the interior design. The municipally used storeys are marked by various floor coverings: While the purely administrative areas feature wooden floors, the public areas (approx. 4000 square meters) are covered by metal floors by HOBA STEEL, product SPIN Plan. HOBA STEEL manufactured the metal surfaces and delivered them to the raised floor manufacturer PBS in the Netherlands. The PBS-Holland company finished the raised floor, format size 600 x 600 mm, and laid them out in the object. It was only due to the per-

fect, precise stamping technology of HOBA STEEL that the requirements of the designers and the builder could be realized in the metal sheeting. The metal floor covering SPIN Plan by HOBA STEEL intelligently supports the concept of the architects: Not only does it reflect the light coming in from outside, but it allows for a clear structure in the basic geometric shapes and creates order in the architecture. The robust floor covering material SPIN Plan is ideally suited to equip highly frequented traffic routes and areas and additionally provide them with an equally elegant as well as modern style.



New construction in the Ruhr West University at the Mülheim campus

The Mülheim Campus was designed by the consortium HPP Hentrich-Petschnigg & Partner and ASTOC



Architects & Planners. A tactile guidance system for the blind was installed by HOBA STEEL for the blind and visually handicapped in all entry storeys in the interior. HOBA STEEL has been manufacturing the SPIN Safe product group ever since 2009. To make it easier for the

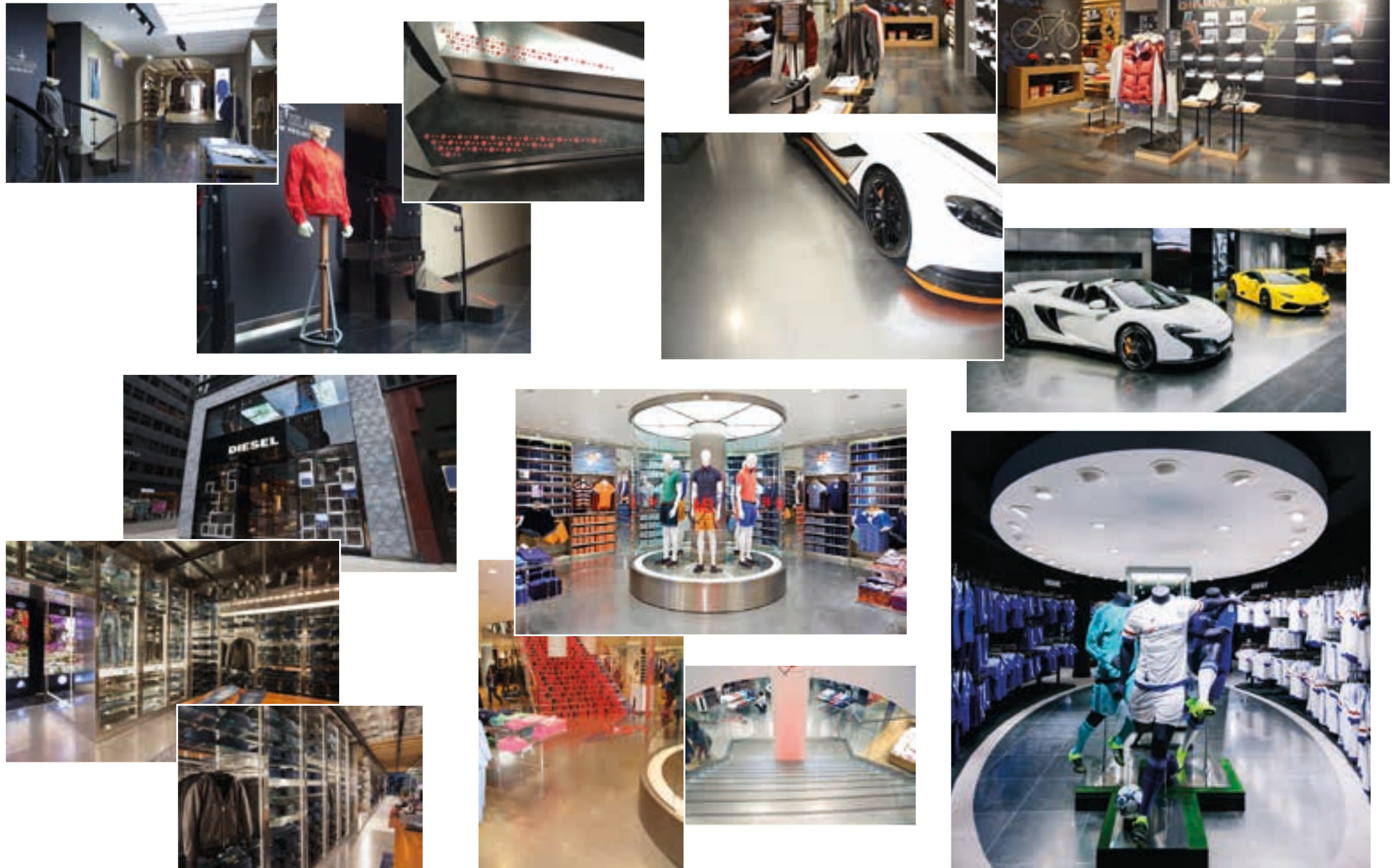
designers, the SPIN Safe products feature various materials on the bottom side (such as Polyester/PVC/stone). The bottom sides are adapted to the adjacent floor coverings. This is done without joints and as of only 2.5 mm thickness, but also with laying out with joints between artificial stones or tiles for example at a thickness of up to 20 mm.

A version for retrofitting is also available which can be glued onto existing flooring (by epoxy or PU glue). SPIN Safe is put down by floorers or tilers; the designer does not need an extra subsection. The SPIN Safe system is planned and contracted out together with the top floor and thereby also reduces the area of the floor cover to be installed. The surface of SPIN Safe is made of stainless steel and was designed in accordance with the specifications of DIN 32984. Current areas of use include interiors and roofed-over exteriors. Numerous references are available.

Store construction

with SPIN products

Floor coverings, tiles, steps, wall tiles, bases, custom-made products



Living with steel

Product diversity SPIN - tiles made of stainless steel - also for deluxe living areas

Floor tiles sizes 600 x 600 mm, 1.200 x 1.200 mm, 1.200 x 150 mm, 1.200 x 200 mm, 1.200 x 300 mm, 1.200 x 600 mm, 2.400 x 1.200 mm

Tiles sizes 297,5 x 297,5 mm, 597,5 x 597,5 mm, 597,5 x 47,5 mm, 597,5 x 97,5 mm, 597,5 x 147,5 mm, 597,5 x 197,5 mm, 597,5 x 297,5 mm, 597,5 x 1.197,5 mm

